



# GIRLS NIGHT

*Out*

**CEDARLEA FARMS**



NOVEMBER 17, 2022 • ON THE FARM • HODGEVILLE, SK

STARTING AT 1:00 PM • PRODUCTION SALE





# WELCOME

## TO GIRLS NIGHT OUT

It gives us a great deal of pleasure to welcome you to the Girls Night Out sales event! This has been a long time in the making going back over 5 decades when we purchased our first Charolais breeding females from Lori's parents Jean and Leo Dayne. We have successfully grown to the point where we can offer a set of outstanding females right off the top of our herd. This definitely is the cream of the crop with the top end of our bred heifers, young bred cows and heifer calves on offer. These special females will leave an indelible mark on the Charolais breed.

We are very proud of our cowherd and the contributions we have made to the Charolais gene pool. We have made it a priority and are focused on structural soundness, fertility, calving ability, udder conformation, growth traits and disposition. We have brought in the best available genetics from across Canada and around the world to continually improve and meet our breeding goals. The success of our annual bull sale is a testament to the acceptance of our program. Our philosophy is to build on strong cow families by taking a balanced approach when making mating decisions, working towards consistency and uniformity. Any seedstock program is only as strong as the cows in the herd. As you page through the catalogue you will recognize a number of the cow families that have produced such sires as Tapadero, Shoeless Joe, Epic, Howitzer, Galveston, Low Rider to name a few.

We feel this is an exceptionally strong set of females and are confident they will work: no matter if you choose to use them for raising herd bulls or looking for a solid show heifer project, here's your opportunity. We are also offering a special semen lot from the Winchester Lock N Load Q1E bull. His first calves hit the ground this spring and we are excited about them to say the least!

We want to thank all of our family, friends and customers who have supported us along the way, its very much appreciated. You are welcome to stop by any time to tour the herd and look at the sale cattle. Please join us for lunch November 17, we look forward to hosting everyone here in our new sale facility. The time is right for a Girls Night Out!

*Garner, Lori, Brian and Kylie*





# GIRLS NIGHT

## Out

### CEDARLEA FARMS

Female Sale · November 17, 2022 · 1:00 pm · at the farm in Hodgeville, SK

## Sale Day Information

### Sale Day Contacts:

Brian (BJ) Hawkins (306) 650-7766  
Kylie Deobald (306) 648-7365  
Lori Deobald (306) 677-7776  
Garner Deobald (306) 677-7777

### Sales Staff:

#### Auctioneer:

Chris Poley (306) 220-5006

#### Ringside:

Ben Wright (519) 374-3335  
Shane Michelson (403) 363-9973  
Levi Rimke (204) 851-4515

### Sale Management:

#### T Bar C Cattle Co. Ltd.

Box 2330, Warman, SK S0K 4S0  
Ph: 306-933-4200 Fax: 306-934-0744  
info@tbarc.com www.tbarc.com



### Insurance:

Insurance will be available on sale day.

### Financing Terms Available:

50% down sale day, 50% due May 1, 2023. Please contact Garner Deobald or Chris Poley for more information and to make arrangements.

### Accommodations:

#### Swift Current:

Holiday Inn Express (306) 773-8288  
Home Inn & Suites (306) 778-7788  
Motel 6 (306) 778-6060

#### Moose Jaw:

Ramada by Wyndham (306) 693-3050  
Best Western Plus (306) 972-3334  
Grant Hall Hotel (306) 691-2113

### Internet Bidding:

Mark Shologan (780) 699-5082  
Internet bidding will be available at dlms.ca.  
Please preregister before the sale.



### Special Representatives:

Canadian Charolais Association President:  
*Kasey Phillips*  
Canadian Charolais Association General Manager:  
*Craig Scott*  
Saskatchewan Charolais Association President:  
*Jordan Moore*  
Canadian Charolais Youth Association President:  
*Tyson Black*

### Sale Consultants:

#### By Livestock and Charolais Banner:

Helge By (306) 536-4261

#### Wright Livestock Marketing Services:

Jon Wright (306) 807-8424

### Photographer

Kolby Heaven: Heaven Cattle Company

Follow us for the Latest News!



@Cedarlea Farms

### Directions:

- From the Junction of Highway #1 and # 19, go South 24 km to Six Mile Road, go East on Six Mile Road for 9.5 km to Range Road 3070
- From Hodgeville, go 9 km North on Highway #19 to Six Mile Road, go East on Six Mile Road for 9.5 km to Range Road 3070

## Junior Incentive Program

Buy any heifer calf in the sale and participate in the CCYA National Show, Provincial Charolais Junior Show or Regional 4H Show:

- Class winners receive \$100
- Division Champions \$250
- Grand Champion Female \$500

To a maximum of \$500



# From The Desk at **T Bar C**

Cowboys, polish your boots and put on a clean shirt... as we would like to invite and welcome you to the "Girls Night Out" on Tuesday November 17th at Cedarlea Farms, Hodgeville, Saskatchewan for one of the leading highlight events of the Charolais season.

Exciting... after breeding Charolais seedstock for fifty years, Garner, Lori, Brian and Kylie at Cedarlea have virtually "opened the gates" to all the young females in the herd. We are all aware of the repeated success Cedarlea has each spring supplying breeders and ranchers with high quality sires... supplying not only the ranchers in the rolling grasslands of the prairies, but breeders around the globe.

The offering is outstanding in every category. The heifer calves, headed by the first Houlio's offered will be a feature, but don't overlook their contemporaries as they are of a competitive nature and are sure to make foundation females in years to follow... ideal for juniors of any age.

The bred female section is amazing... exceptional quality with documentation...it's a given! In past decades, these folks have concentrated on soundness, udder type and shape in their cowherd without sacrificing performance .... performance that brings repeated customers year after year. The group of bred yearlings are wow! Deep, broody with lots of shape, hair, and great services. The "Lock N Load" semen package will give purchasers a start with their 2023 breeding intentions and save a little tax in the process.

We all are aware of the demand for Charolais in the marketplace... the great "white wave" is upon us. Every presort in sale barns throughout the nation start their sale with Char-cross calves.

Feel free to stop by Cedarlea any time prior the sale and preview the offering. These folks are dedicated livestock producers with a powerful herd of seedstock. Give Garner, Lori, Brian and Kylie at Cedarlea a call and discuss the lineup and those which will fit your breeding intentions.

It's "date-night" in Hodgeville on November 17th at 1:00 P.M. We invite you to come to town and see how many of these girls you would like to take home... feel free to give any of the T Bar Team a call and we will assist you with your purchases in a professional and confidential manner.

*Chris Poley*



**Chris Poley**  
306-220-5006



**Shane Michelson**  
403-363-9973



**Ben Wright**  
519-374-3335



BOEHRINGER INGELHEIM PROUDLY RECOGNIZES

# CEDARLEA FARMS

AS AN

## EXPRESS® FP VACCINATED HERD

EXPRESS® FP is the most complete family of modified live virus (MLV) vaccines\*, offering a strong level of BVD fetal protection.

Cedarlea Farms bred females have been vaccinated pre-breeding with EXPRESS® FP to provide the developing calf guaranteed protection against the detrimental effects of BVD.

**Peace of Mind Boehringer Ingelheim EXPRESS® FP Guarantee.** If you find a BVD Persistently Infected (PI) calf from one of our EXPRESS® FP vaccinated bred females sold today, Boehringer Ingelheim will pay the fair market value in cash, plus the cost of testing.\*

### PREVENT BVD PI CALVES IN YOUR OWN HERD

Learn more at [EXPRESSVerified.ca](https://www.expressverified.ca) or call  
**Steve Cuddington** at (306) 537-0417  
**Chad VanderMeer** at (780) 399-4809



**EXPRESS® FP**

\* The EXPRESS® FP Family of vaccines includes Express® FP5, Express FP5 /Somnugen®, Express® FP5 VL5, and Express® FP10. EXPRESS® FP is a registered trademark of Boehringer Ingelheim Vetmedica GmbH, used under license. ©2022 Boehringer Ingelheim Animal Health Canada Inc. All Rights Reserved.



# HEIFER CALVES



Lot 1

lot 1

## CEDARLEA *Ucala* 113K

January 24, 2022 • FC833865 • LE0 113K • Homo Polled

SKW EXPEDITION 89C  
ELDER'S HOULIO 4H  
WRANGLER PRETTY LADY 98C

CSS SIR GRIDMAKER 2W  
CEDARLEA UCALA 70A  
CEDARLEA UCALA 60U

EPDS	BW	WW	YW	MTL	Milk
	0.6	51	98	45	20

BW 86 • WW 652



Dam: CEDARLEA UCALA 70A

- Ranks in the Top 20% for CW/REA, 25% WW/YW, 35% CE, 40% TM/MARB
- A very classy Houlio, Elder's \$110,000 high selling bull in 2021
- Ucala 70A has that distinct Gridmaker 2W X Detonator appearance
- 70A has produced bulls working at Downie Lake Colony
- Two half sibs sell: Ucala 21J as lot 38 and Ucala 67G as lot 14 – producer of a high selling bull going to Hicken Ranches



- Ranks in the Top 1% for REA, 3% CW, 10% WW/YW, 15% MARB, 20% TM
- One of the first daughters sired by the incomparable Elder's Houlio 4H to sell
- A fancy Houlio heifer out of Uza 44Y the dam of Cedarlea Tapadero 17G working at Kay R Charolais and Cedarlea Foreman 42E working at Sunny Ridge Stock Farm
- Granddam Uza 39U - Gold Star Dam of Distinction, a very productive cow family
- Uza 65J half sister sells as lot 28
- Here is a great opportunity to get in on the ground floor of a female that has a royal pedigree



Dam: CEDARLEA UZA 44Y



Lot 2

**lot 2** CEDARLEA *Uza* 24K

January 14, 2022 • FC833471 • LEO 24K • Homo Polled

SKW EXPEDITION 89C

**ELDER'S HOULIO 4H**

WRANGLER PRETTY LADY 98C

CSS SIR GRIDMAKER 2W

**CEDARLEA UZA 44Y**

CEDARLEA UZA 39U

EPDS	BW	WW	YW	MTL	Milk
	2.8	56	110	49	21

BW 106 • WW 655

**lot 3** CEDARLEA *Stella* 41K

January 15, 2022 • FC833492 • LEO 41K • Homo Polled

SKW EXPEDITION 89C

**ELDER'S HOULIO 4H**

WRANGLER PRETTY LADY 98C

SOS POLLED DETONATOR 8M

**CEDARLEA STELLA 2A**

CEDARLEA STELLA 66Y

EPDS	BW	WW	YW	MTL	Milk
	-1.7	48	92	48	24

BW 79 • WW 587



Dam: CEDARLEA STELLA 2A



Lot 3

- Ranks in the Top 20% for CE, 20% BW, 25% M/TM, 30% REA/FAT, 35% YW, 40% WW
- The Stella cow family has produced progeny like Cedarlea Ty Cobb 78C who worked very well for Wrangler Charolais and bulls going to Turkey Track Ranch
- Stella 108H - half sister sells as lot 20
- Another opportunity to own a top-notch Houlio sired heifer out of a highly proven cow family





Lot 4

- Ranks in the Top 10% for CE, 20% BW, 25% REA, 35% TM, 40% M, 45% WW
- A Stylish Shoeless Joe daughter, loose hided with a ton of hair
- Cedarlea Shoeless Joe 83C has done a fantastic job at Turnbull Charolais producing both powerful bulls and productive females
- Half sibling Showgirl 173H sells as lot 23
- Showgirl 46D produced the high selling bull in our 2020 sale - Cedarlea Bandito 45G going to Cornerview Charolais



Dam: CEDARLEA SHOWGIRL 46D

**lot 4 CEDARLEA Showgirl 74K**

January 19, 2022 FC833811 • LE0 74K • P

CIRCLE CEE LEGEND 307A

**CEDARLEA SHOELESS JOE 83C**

CEDARLEA BITTY 27A

PCC ROME 437B

**CEDARLEA SHOWGIRL 46D**

CEDARLEA SHOWGIRL 101A

EPDS	BW	WW	YW	MTL	Milk
	-1.5	46	83	46	23

**BW 94 • WW 641**

**lot 5 CEDARLEA Sarratoga 86K**

January 20, 2022 • FC833835 • LE0 86K • Homo Polled

LT AUTHORITY 7229 PLD

**CEDARLEA HOWITZER 49H**

CEDARLEA WHITBY 86C

GERRARD PASTOR 35Z

**CEDARLEA SARRATOGA 90B**

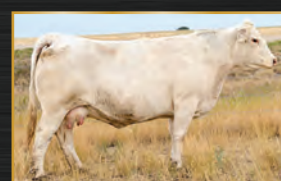
CEDARLEA SARATOGA 33S

EPDS	BW	WW	YW	MTL	Milk
	2.1	56	109	54	26

**BW 98 • WW 682**



Lot 5



Dam: CEDARLEA SARRATOGA 90B

- Ranks in the Top 1% for CW, 3% TM, 10% WW/YW, 15% M, 30% REA, 35% MARB
- A dynamic Howitzer daughter out of a powerhouse Pastor cow
- Cedarlea Howitzer 49H is doing a fantastic job at Wienk's Ranch in South Dakota
- The Sarratoga cow family has produced numerous bulls working at Goodbrand Land and Cattle, David Ives in MB, Maddess Ranch and the Matador Pasture
- Sarratoga 90B is a full sister to Sarratoga 47C - Gold Star Dam of Distinction who's daughter 108K sells as lot 6.



- Ranks in the Top 10% for M/TM/CW, 20% YW, 30% WW/MARB, 45% REA
- Fantastic Column heifer with extra spring of rib, flank and depth that we're always looking for
- Saratoga 47C is a Gold Star Dam of Distinction
- 47C has bulls working at Strutt Charolais and Molde Farms



Lot 6



Dam: CEDARLEA SARATOGA 47C

**lot 6 CEDARLEA Saratoga 108K**

January 23, 2022 • FC833861 • LE0 108K • Homo Polled

PLEASANT DAWN CHISUM 216A

**PLEASANTDAWN COLUMN 730G**

PLEASANTDAWN LADY 730Z

GERRARD PASTOR 35Z

**CEDARLEA SARATOGA 47C**

CEDARLEA SARATOGA 33S

EPDS	BW	WW	YW	MTL	Milk
	1.8	50	99	52	27

BW 104 • WW 670

**lot 7 CEDARLEA Willow 167K**

February 2, 2022 • FC833913 • LE0 167K • Homo Polled

PLEASANTDAWN COUNTER 19C

**CEDARLEA THE COUNT 175F**

CEDARLEA TWISTER 24D

CSS SIR GRIDMAKER 2W

**CEDARLEA WILLOW 52A**

CEDARLEA WILLOW 3W

EPDS	BW	WW	YW	MTL	Milk
	2.7	50	101	48	23

BW 100 • WW 670



Dam: CEDARLEA WILLOW 52A

- Ranks in the Top 15% CW, 20% YW/TM, 25% WW/REA, 35% M
- Willow 167K is a robust, deep bodied Count daughter with an extra heavy haircoat
- Willow 12J a Turnbulls Elite half sister sells as lot 36
- 52A has bulls working at Habscheid's and Downie Lake Colony



Lot 7





Lot 8

lot 8

**CEDARLEA** *Tinsel* **226K**

February 15, 2022 • FC831334 • LEO 226K • P

VENTURON MAXIMUM IMPACT  
**WINCHESTER LOCK N LOAD Q1E**  
 WINCHESTER HONOR H13E

CIRCLE CEE LEGEND 307A  
**CEDARLEA TINSEL 68F**  
 CEDARLEA TINSEL 25C

EPDS	BW	WW	YW	MTL	Milk
	0.6	47	97	54	31

**BW 95 • WW 680**



*Dam: CEDARLEA TINSEL 68F*

- Ranks in the Top 1% M, 2% TM, 20% CW/REA, 25% YW, 40% WW/CE
- The first Lock n Load daughter to sell!! We are thrilled with the Lock n Load get!!
- Tinsel 226K is the complete package: attractive, beautiful muscle expression, structurally sound, with extra hair as a bonus
- Tinsel 68F is the dam of one of our high selling bulls in 2022 Cedarlea J P Morgan 156J to LZ Farms
- Granddam Tinsel 25C is a Gold Star Dam of Distinction





Lot 9

lot 9

WINCHESTER

*Lock N Load*

Q1E

February 13, 2019 • MC828544 • GAV Q1E • P

VENTURON KEYSTONE  
**VENTURON MAXIMUM IMPACT**  
 VENTURON HILLARY

EATONS ROYAL DYNASTY 6164  
**WINCHESTER HONOR H13E**  
 ROSEDALE HONOR X89

EPDS	BW	WW	YW	MTL	Milk
	2.1	46	88	48	25



*Half Sister, Supreme Champion at the Sydney Royal*

### Selling 10 packages of 10 doses each

Here is your opportunity to use one very unique bull with a diverse outcross pedigree that's shooting the lights out in Australia and now here in Canada! His pedigree is backed up by the fail-safe Honor cow family at Gavin and Kristie O'Brien's Winchester Livestock Orange, NSW, Australia. Lock N Load is walking at Nigel & Casey Wieck's CB Charolais near Delungra NSW. They find this exciting bull to have a lot of mating flexibility, and can be used over a wide range of cows and get a consistent and predictable style or type. The Honor cow family has been exceptionally productive with many high sellers and show winners including Sydney Royal Supreme Charolais. Lock N Load's granddam Rosedale Honor X89 was still going strong at 18 years of age, incredible longevity!

We used Lock and Load to add hip, muscle shape and over-all thickness. For a bull with more muscle, he is still very clean upfront and inherited his great feet and calving ease from Eaton's Royal Dynasty 6164. He has been a plus for adding hair to this year's calves at Cedarlea Farms.

- 15-month scrotal measurement 39cm
- Birthweight - 90 lbs unassisted







Lot 10

**lot 10 CEDARLEA Sunrise 142F**

February 12, 2018 • FC744158 • LEO 142F • Homo Polled

TR MR FIRE WATER 5792RET

**PZC BOTTOMS UP 5011 ET**

THOMAS MS IMPRESSIVE 0641

CSS SHOW BOAT 5J

**CEDARLEA SUNRISE 31S**

WEEKES OCHRE MISS 53K

EPDS	BW	WW	YW	MTL	Milk
	-0.9	40	85	45	25

**BW 101 • WW 634 • YW 1053**

- Ranks in the Top 15% for M/REA, 20% CW/LY, 25% BW, 40% CE/TM
- Sunrise 142F is maternal through and through, the type of cow that's easy keeping but has the punch to produce calves with above average growth
- The Bottoms Up daughters also have the mating flexibility so you can select genetics from across the full spectrum of the herd-book
- 142F produced Cedarlea Mantle 52H a Circle Cee Legend son working for Goodbrand Land and Cattle in AB
- Bred April 30, 2022 to RBM Fargo Y111 - Ultrasound checked safe to AI

**lot 10A CEDARLEA Sunrise 237K**

February 19, 2022 • FC834040 • LEO 237K • Homo Polled

LT AUTHORITY 7229 PLD

**CEDARLEA HOWITZER 49H**

CEDARLEA WHITBY 86C

PZC BOTTOMS UP 5011 ET

**CEDARLEA SUNRISE 142F**

CEDARLEA SUNRISE 31S

EPDS	BW	WW	YW	MTL	Milk
	-1.6	46	93	47	24

**BW 82 • WW 653**

- Ranks in the Top 20% for BW/CW/REA, 25% M/TM/MARB, 35% CE/YW
- Sunrise 237K has a unique pedigree that combines many of our strong maternal lines but has above average growth, nice combination
- We like this heifer a lot, keep an eye on this one



Lot 10A



lot 11

# CEDARLEA Tinsel 9F

January 19, 2018 • FC744040 • LEO 9F • P

TR MR FIRE WATER 5792RET

PZC BOTTOMS UP 5011 ET

THOMAS MS IMPRESSIVE 0641

WINN MANS LANZA 610S

CEDARLEA TINSEL 55B

CEDARLEA TINSEL 27T

EPDS	BW	WW	YW	MTL	Milk
	-1.2	38	84	51	32

**BW 99 • WW 617 • YW 958**

- Ranks in the Top 1% for M, 10% TM, 20% CE/REA, 25% BW, 30% LY, 35% CW
- Tinsel 9F is a special female out of one of our most prolific cow families
- Stacked pedigree - Firewater, Impressive D040, Lanza
- Tinsel 55B produced half brothers Cedarlea Gallery 26G high selling bull in 2020 to Charworth Charolais and Cedarlea Gladiator 164E selling to Excel Charolais
- Calved February 8, 2022 polled bull LEO 204K sired by Cedarlea Tapadero 17G, BW 95 lbs retained for March 15, 2023 bull sale
- Bred May 5, 2022 to Hopewell Strada 48H - Ultrasound checked safe to AI



Lot 11

lot 12

# CEDARLEA Mrs Roper 18F

January 20, 2018 • FC744050 • LEO 18F • Homo Polled

ROSSO DOUBLE DOWN 8Z

JWX DIPLOMAT 254D

JWX SUZANNE 654Z

SPARROWS RENO 824U

CEDARLEA MRS ROPER 116C

CEDARLEA UBEE A ROPER 66U

EPDS	BW	WW	YW	MTL	Milk
	-0.8	34	72	41	23

**BW 88 • WW 651 • YW 1024**

- Ranks in the Top 15% for CE, 25% MARB, 30% BW/M
- Very complete and attractive free and easy moving Diplomat daughter
- Mrs Roper 116C is also the dam of Cedarlea Utah 44C working at Brian Archer's in Ontario
- Mrs Roper 113G full sister sells as lot 18
- Bred April 28, 2022 to Cedarlea The Count 175F - Ultrasound checked safe to AI



Lot 12

lot 12A

# CEDARLEA Mrs Roper 111K

January 23, 2022 • FC833864 • LEO 111K • Homo Polled

CIRCLE CEE LEGEND 307A

CEDARLEA SHOELESS JOE 83C

CEDARLEA BITTY 27A

JWX DIPLOMAT 254D

CEDARLEA MRS ROPER 18F

CEDARLEA MRS ROPER 116C

EPDS	BW	WW	YW	MTL	Milk
	1.2	48	93	45	21

**BW 96 • WW 611**

- Ranks in the Top 30% for CE/MARB, 35% WW/YW/REA, 40% TM
- 111K is a very appealing sweet heifer with a great disposition
- You have to appreciate this heifer - clean fronted, angular and a ton of appeal



Lot 12A



**lot 13 CEDARLEA *Wilhelmina* 177G**



Lot 13

February 25, 2019 • FC766861 • LE0 177G • Homo Polled

ROSSO DOUBLE DOWN 8Z

**JWX DIPLOMAT 254D**

JWX SUZANNE 654Z

SPARROWS RENO 824U

**CEARLEA WILHELMINA 80A**

CEARLEA WILHELMINA 28W

EPDS	BW	WW	YW	MTL	Milk
	-1.5	29	67	35	21

**BW 93 • WW 632 • YW 859**

- Ranks in the Top 5% for CE, 20% BW
- The Diplomat daughters are moderate framed, refined well balanced with nice udders
- The Wilhelmina cow family has produced bulls for Downie Lake Colony, Turkey Track Ranch, Ryan Keck, SKJ Land and Cattle
- The Arctic Wolf X Diplomat cross should work incredibly well
- Calved January 16, 2022 polled heifer LE0 152K sired by Elder's Houlio 4H, BW 73 lbs retained in the Cedarlea Farms replacement heifer pen
- Bred April 18, 2022 to TRI-N Arctic Wolf 52J - Ultrasound checked safe to AI

**lot 14 CEDARLEA *Ucala* 67G**

January 27, 2019 • FC766403 • LE0 67G • P

LT RUSHMORE 8060 PLD

**LT AFFINITY 6221 PLD**

LT ATHENA 1247

CSS SIR GRIDMAKER 2W

**CEARLEA UCALA 70A**

CEARLEA UCALA 60U

EPDS	BW	WW	YW	MTL	Milk
	-3.2	37	70	35	16

**BW 88 • WW 668 • YW 940**

- Ranks in the Top 2% for CE, 10% BW, 25% MARB
- Ucala 67G is free and easy moving, structurally sound young female going back to one of the best daughters of Gridmaker 2W, winner of the CWA Royal Bank Supreme
- Half sibs sell: Ucala 113K Lot 1 and Ucala 21J Lot 38
- 67G produced a high selling bull going to Hicken Ranches
- The Ucala cow family has produced bulls for Downie Lake Colony, Hicken Ranches, Whitby Farms and Habscheid's
- Calved January 23, 2022 polled bull LE0 89K sired by Elder's Houlio 4H, BW 96 lbs retained for March 15, 2023 bull sale
- Bred May 17, 2022 to Cedarlea The Count 175F - Ultrasound checked safe to AI



Lot 14



**lot 15 CEDARLEA *Uza* 114G**

February 5, 2019 • FC766580 • LEO 114G • Homo Polled

SPARROWS FARGO 811U

**RBM FARGO Y111**

HC RHINESTONE 5100

G.BROS ULTIMATE 918X

**CEDARLEA UZA 23A**

CEDARLEA UZA 44Y

EPDS	BW	WW	YW	MTL	Milk
	0.2	54	108	47	20

**BW 95 • WW 661 • YW 906**

- Ranks in the Top 5% for REA, 10% YW/LY, 15% WW/CW, 20% CE, 30% TM, 40% BW/MARB
- Uza 114G is the dam of Cedarlea Supremacy 53J one of the high dollar bulls from our 2022 sale selected by the Cholak's Circle Cee Charolais
- Uza 23A produced Cedarlea Cy 9C a high seller in 2016 going to Prairie Gold Charolais
- Uza 44Y produced Cedarlea Tapadero 17G high selling bull in 2020 to Kay-R Charolais and Cedarlea Foreman 42E going to Sunny Ridge Stock Farms
- Uza 114G is mated to the impressive homo-polled WGD Ruger 8J the 2022 high seller at the Daines Cattle Bull sale
- Calved January 31, 2022 polled bull LEO 152K sired by Elder's Houlio 4H, BW 92 lbs retained for March 15, 2023 bull sale
- Bred May 1, 2022 to WGD Ruger 8J - Ultrasound checked safe to AI

- Ranks in the Top 3% for TM, 10% M/CW, 20% WW/YW/REA/LY, 25% CE
- Taupe 140G is an exquisite young cow that fits the Fargo style and pattern
- The Taupe cow family has produced bulls for Whitby Farms, Still Hill Land and Cattle, Last Chance Ranch, Russell Belbeck, WLL Farms Inc Jeff and Carmen Watson
- Taupe 140G's Elite daughter Taupe 13J sells as lot 37
- The mating to Lock N Load will result in a very exciting saleable offspring
- Calved March 8, 2022 polled bull LEO 268K sired by Turnbull's Elite 322E, BW 100 lbs retained for March 15, 2023 bull sale
- Bred April 17, 2022 to Winchester Lock N Load Q1E - Ultrasound checked safe to AI



Lot 15

**lot 16 CEDARLEA *Taupe* 140G**

February 12, 2019 • FC766628 • LEO 140G • P

SPARROWS FARGO 811U

**RBM FARGO Y111**

HC RHINESTONE 5100

PCC ROME 437B

**CEDARLEA TAUPE 12D**

CEDARLEA TAUPE 5Z

EPDS	BW	WW	YW	MTL	Milk
	2.5	52	102	53	27

**BW 100 • WW 667 • YW 904**



Lot 16





Lot 17

**lot 17 CEDARLEA Razzle 165G**

February 20, 2019 • FC766832 • LEO 165G • P

SPARROWS FARGO 811U

**RBM FARGO Y111**

HC RHINESTONE 5100

CSS SIR GRIDMAKER 2W

**CEDARLEA RAZZLE 65Z**

CEDARLEA RAZZLE 49R

EPDS	BW	WW	YW	MTL	Milk
	3.4	51	101	47	21

**BW 107 • WW 634 • YW 906**

- Ranks in the Top 10% for CW, 20% YW/LY, 25% WW/REA, 30% TM, 40% CE
- Another superb young cow made in the Fargo mould
- Razzle 165G's produced a solid Count bull calf that sold in our 2022 bull sale and is now working at Poverty Valley Ranch
- Razzle 65Z one of the most productive Gridmaker 2W cows in our herd, bulls have been selected by Robert Kennedy, Stan Perrin, Mastad Ranch and the Corcoran Ranch
- Bred April 13, 2022 to Winchester Lock N Load Q1E - Ultrasound checked safe to AI



Lot 17A

**lot 17A CEDARLEA Razzle 157K**

February 1, 2022 • FC833903 • LEO 157K • P

PLEASANTDAWN COUNTER 19C

**CEDARLEA THE COUNT 175F**

CEDARLEA TWISTER 24D

RBM FARGO Y111

**CEDARLEA RAZZLE 165G**

CEDARLEA RAZZLE 65Z

EPDS	BW	WW	YW	MTL	Milk
	2.8	52	105	47	21

**BW 92 • WW 659**

- Sells as pair with 165G
- Ranks in the Top 15% for YW/CW, 20% WW, 25% TM/REA
- An attractive Count heifer that has the potential to be a front pasture female
- The Razzle cow family is very consistent and dependable



Lot 18

**lot 18 CEDARLEA Mrs Roper 113G**

February 5, 2019 • FC766578 • LEO 113G • Homo Polled

ROSSO DOUBLE DOWN 8Z

**JWX DIPLOMAT 254D**

JWX SUZANNE 654Z

SPARROWS RENO 824U

**CEDARLEA MRS ROPER 116C**

CEDARLEA UBEE A ROPER 66U

EPDS	BW	WW	YW	MTL	Milk
	-1.3	30	68	37	22

**BW 85 • WW 634 • YW 885**

- Ranks in the Top 10% for CE, 20% BW, 45% M/MARB
- Mrs Roper 113G is a top end Diplomat daughter, the Diplomats make fantastic cows...the right kind
- Mrs Roper 18F full sister sells as lot 12
- Mrs Roper cow family has produced bulls for Brian Archer in ON, David Ives in MB and Poplar View Cattle Company in AB
- Calved February 19, 2022 polled bull LEO 241K sired by Winchester Lock N Load Q1E, BW 92 lbs retained for March 15, 2023 bull sale
- Bred April 17, 2022 to Elder's Houlio 4H - Ultrasound checked safe to AI



**lot 19 CEDARLEA *Tassel* 44G**

January 25, 2019 • FC766379 • LEO 44G • Homo Polled

SPARROWS FARGO 811U

**RBM FARGO Y111**

HC RHINESTONE 5100

STEPPLER 8T

**CEDARLEA TASSEL 74X**

CEDARLEA TASSEL 32T

EPDS	BW	WW	YW	MTL	Milk
	2.4	54	108	44	17

**BW 109 • WW 675 • YW 1004**

- Ranks in the Top 10% for YW/CW, 15% WW, 30% CE, 35% REA/LY, 45% TM
- Big volume Fargo daughter with extra punch and performance
- Tassel 44G mated to Tri-N Arctic Wolf 52J the high selling Jehu son makes this one to watch out for
- Calved January 23, 2022 polled bull LEO 123K sired by Cedarlea The Count 175F, BW 88 lbs retained for March 15, 2023 bull sale
- Bred April 19, 2022 to TRI-N Arctic Wolf 52J - Ultrasound checked safe to AI



Lot 19

**lot 20 CEDARLEA *Stella* 108H**

February 3, 2020 • FC788960 • LEO 108H • Homo Polled

SPARROWS FARGO 811U

**RBM FARGO Y111**

HC RHINESTONE 5100

SOS POLLED DETONATOR 8M

**CEDARLEA STELLA 2A**

CEDARLEA STELLA 66Y

EPDS	BW	WW	YW	MTL	Milk
	2.4	58	113	51	22

**BW 103 • WW 706 • YW 1019**

- Ranks in the Top 5% for YW, 10% WW/TM/CW/REA/LY, 20% CE, 40% M
- Stella 108H is a striking Fargo daughter with a number of siblings working in our herd as well as a powerful bull working at Ostrander's Turkey Track Ranch
- The Stella cow family produced Cedarlea Ty Cobb 78C purchased by Wrangler Charolais
- 41K half sib 2A X Houlio sells as lot 3
- Valued breeding to Backdraft 2021 \$50,000 Players Club Winner
- Bred April 28, 2022 to MVY Backdraft 35J - Ultrasound checked safe to AI



Lot 20

**lot 20A CEDARLEA *Stella* 25K**

January 14, 2022 • FC833472 • LEO 25K • Homo Polled

LHD CHOTEAU B1669 P

**LT AUTHORITY 7229 PLD**

LT KATY 4273 PLD

RBM FARGO Y111

**CEDARLEA STELLA 108H**

CEDARLEA STELLA 2A

EPDS	BW	WW	YW	MTL	Milk
	-2.2	48	91	46	22

**BW 76 • WW 631**

- Ranks in the Top 5% for CE, 15% BW, 35% TM/MARB, 40% WW/YW
- Authority progeny will produce many calving ease offspring that are in high demand
- 25K will follow in the footsteps of the productive Stella cow family



Lot 20A





Lot 21

*lot* **21**

**CEDARLEA** *Sweet N Sassy* **180H**

February 26, 2020 • FC789018 • LE0 180H • P

LT LEDGER 0332 P  
**CIRCLE CEE LEGEND 307A**  
 CIRCLE CEE STUNNING 125Y

SPARROWS KINGSTON 139Y  
**CEDARLEA SWEET N SASSY 17D**  
 CEDARLEA SWEET N SASSY 33Y

EPDS	BW	WW	YW	MTL	Milk
	-3.2	42	88	49	27

**BW 66 • ACT WW 656 • ACT YW 822**

- Ranks in the Top 10% for CE/BW/M, 20% TM/REA, 40% LY
- Sweet N Sassy 180H is a gorgeous sharp fronted daughter of the incomparable Circle Cee Legend, built just right with a beautiful udder
- Her mating with Elder's Houlio 4H will produce a crackerjack bull or heifer! Houlio 4H was the 2021 \$110,000 high selling bull at Elder's Charolais selected by LT Ranch
- Calved January 11, 2022 polled heifer LE0 10K sired by LT Authority 7229 PLD, BW 76 lbs retained in the Cedarlea Farms replacement heifer pen
- Bred April 27, 2022 to Elder's Houlio 4H - Ultrasound checked safe to AI



- Ranks in the Top 10% for CW, 15% CE/YW, 20% WW, 25% TM/REA, 30% LY
- Sweet N Sassy 189H is as sound as a bell, perfect udder and solid footed like all of the Fargo's
- 189H goes back to the Horseshoe E Sweet N Sassy that had a productive career here at Cedarlea Farms
- Calved February 3, 2022 polled bull LEO 173K sired by LT Authority 7229 PLD, BW 65 lbs retained for March 15, 2023 bull sale
- Bred April 27, 2022 to Cedarlea Howitzer 49H - Ultrasound checked safe to AI



Lot 22

**lot 22 CEDARLEA Sweet N Sassy 189H**

February 28, 2020 • FC789046 • LEO 189H • Homo Polled

SPARROWS FARGO 811U

**RBM FARGO Y111**

HC RHINESTONE 5100

PCC ROME 437B

**CEDARLEA SWEET N SASSY 114D**

LAE SWEET & SASSY 658S

EPDS	BW	WW	YW	MTL	Milk
	1.6	53	105	47	21

**BW 98 • WW 671 • YW 978**

**lot 23 CEDARLEA Showgirl 173H**

February 24, 2020 • FC788999 • LEO 173H • P

SPARROWS FARGO 811U

**RBM FARGO Y111**

HC RHINESTONE 5100

PCC ROME 437B

**CEDARLEA SHOWGIRL 46D**

CEDARLEA SHOWGIRL 101A

EPDS	BW	WW	YW	MTL	Milk
	-0.8	50	93	49	23

**BW 89 • WW 693 • YW 897**

- Ranks in the Top 10% for CE, 20% TM, 25% WW/TM, 30% BW/M/CW, 35% YW
- Showgirl 173H is a deep, big hipped Fargo with a very nice EPD profile
- Showgirl 46D produced high selling bull in 2020 - Cedarlea Bandito 456 selling to Cornerview Charolais
- Calved February 9, 2022 polled bull LEO 192K sired by LT Authority 7229 PLD, BW 80 lbs retained for March 15, 2023 bull sale
- Bred April 13, 2022 to Pleasant Dawn Column 7306 - Ultrasound checked safe to AI



Lot 23





Lot 24

- Ranks in the Top 10% WW/ REA, 15% YW/CW/LY, 20% CE, 25% TM
- Fargo's have some of the best hoof structure you'll find anywhere, ideal size and shape
- Fargo females generally have a nick more frame
- Fargo daughters have a wide range of mating flexibility
- Calved January 16, 2022 polled bull LEO 50K sired by LT Authority 7229 PLD, BW 84 lbs retained for March 15, 2023 bull sale
- Bred April 28, 2022 to Pleasant Dawn Column 730G - Ultrasound checked safe to AI

**lot 24 CEDARLEA *Tapestry* 57H**

January 25, 2020 • FC788908 • LEO 57H • P

SPARROWS FARGO 811U  
 RBM FARGO Y111  
 HC RHINESTONE 5100  
 CSS SIR GRIDMAKER 2W  
**CEDARLEA TAPESTRY 76Y**  
 CEDARLEA TAPESTRY 41T

EPDS	BW	WW	YW	MTL	Milk
	1.2	56	104	47	20

**BW 99 • WW 704 • YW 909**

**lot 25 CEDARLEA *Tinsel* 66H**

January 26, 2020 • FC788917 • LEO 66H • P

TR MR FIRE WATER 5792RET  
**PZC BOTTOMS UP 5011 ET**  
 THOMAS MS IMPRESSIVE 0641  
 CIRCLE CEE LEGEND 307A  
**CEDARLEA TINSEL 30C**  
 CEDARLEA TINSEL 1A

EPDS	BW	WW	YW	MTL	Milk
	-0.6	45	96	58	35

**BW 96 • WW 607 • YW 920**



Lot 25

- Ranks in the Top 1% M/TM, 10% LY, 15% CW, 30% BW/YW, 35% CE
- Tinsel 66H is a stylish young female with a proven pedigree, a maternal powerhouse
- Bottoms Up progeny have the best possible calf vigour score
- 30C produced Cedarlea Bootlegger 79G high selling bull in 2020 for Stolson Farms as well as numerous productive daughters
- Grand Dam Tinsel 1A is a Gold Star Dam of Distinction
- Calved January 12, 2022 polled heifer LEO 11K sired by LT Authority 7229 PLD, BW 84 lbs retained in the Cedarlea Farms replacement heifer pen
- Bred April 27, 2022 to RBM Fargo Y111 - Ultrasound checked safe to AI



- Ranks in the Top 20% for BW/TM, 25% M, 35% BW/WW
- Twister 109H has a stacked pedigree with Authority, Legend and Pastor
- Longevity with great granddam Twister 3X still producing in 2022
- Twister cow family produced Cedarlea The Count 175F
- Calved February 23, 2022 polled heifer LEO 253K sired by HC Hotshot 13H, BW 74 lbs retained in the Cedarlea Farms replacement heifer pen
- Bred April 26, 2022 to RBM Fargo - Ultrasound checked safe to AI



Lot 26

**lot 26** CEDARLEA *Twister* 109H

February 4, 2020 • FC788961 • LEO 109H • Homo Polled

LHD CHOTEAU B1669 P

LT AUTHORITY 7229 PLD

LT KATY 4273 PLD

CIRCLE CEE LEGEND 307A

CEDARLEA TWISTER 153E

CEDARLEA TWISTER 108B

EPDS	BW	WW	YW	MTL	Milk
	-1.5	48	87	48	24

BW 94 • WW 678 • YW 857

**lot 27** CEDARLEA *Poppy* 48H

January 22, 2020 • FC788898 • LEO 48H • P

LHD CHOTEAU B1669 P

LT AUTHORITY 7229 PLD

LT KATY 4273 PLD

PCC ROME 437B

CEDARLEA POPPY 90D

CEDARLEA POPPY 45A

EPDS	BW	WW	YW	MTL	Milk
	-3.1	33	64	42	25

BW 86 • WW 600 • YW 805

- Ranks in the Top 10% CE/BW 10%, 15% M
- Poppy 48H is a typical moderate framed LT Authority: fertile with calving ability, an ideal udder shape, teat placement and size, all in an anatomically sound package.
- The Poppy cow family has raised bulls for Elders Charolais, AM Sunrise Charolais, Kattle Kountry, Don & Karen Blake
- Calved January 17, 2022 polled bull LEO 62K sired by Circle Cee Legend 307A, BW 86 lbs retained for March 15, 2023 bull sale
- Bred May 3, 2022 to Hopewell Strada 48H - Ultrasound checked safe to AI



Lot 27





Lot 28

*lot* **28**

**CEDARLEA** *Uza* **65J**

January 21, 2021 • FC811371 • LEO 65J • Homo Polled

PLEASANTDAWN COUNTER 19C  
**CEDARLEA THE COUNT 175F**  
 CEDARLEA TWISTER 24D

CSS SIR GRIDMAKER 2W  
**CEDARLEA UZA 44Y**  
 CEDARLEA UZA 39U

EPDS	BW	WW	YW	MTL	Milk
	1.2	55	109	47	19

**BW 104 • WW 643 • YW 985**

- Ranks in the Top 2% for REA/LY, 10% WW/YW/CW, 30% TM
- Here is a powerful Count daughter that's one of the best, you'll have to drive many many miles to find one like her!
- 65J is a daughter of UZA 44Y the dam of Cedarlea Tapadero 17G the high selling bull going to Kay-R Charolais, Cedarlea Foreman 42E selling to Sunny Ridge Stock Farms, and Cedarlea Bullion 91B selling to Dr. Otilio Valdez Correa, Jalisco MX
- The Uza cow family has been very productive - Granddam Uza 39U is a Gold Star Dam of Distinction
- Half sister 24K Houlio X 44Y sells as lot 2
- Bred April 13, 2022 to Brimmer Bull 44J - Ultrasound checked safe to AI



Sire: **CEDARLEA THE COUNT 175F**



Dam: **CEDARLEA UZA 44Y**



- Ranks in the Top 25% for YW, 30% for CW/FAT, 35% M/LY
- A deep, big volume The Count female from the productive Uza cow family
- Going back to the Gold Star Dam of Distinction LEO 39U one of the most productive and high dollar earning cows at Cedarlea Farms, many herd bulls have come from this cow family now working at Stolson Farms, Goodbrand Land and Cattle, Prairie Gold Charolais, Will and Cindy Lowe's LZ Farms, Kay R Charolais, Sunny Ridge Stock Farms and Dr. Valdez Correa to name a few
- Uza 23C has produced bulls working at Stolson Farms and Strutt Charolais
- Bred April 13, 2022 to Turnbull's Elite 322E - Ultrasound checked safe to AI



Lot 29

**lot 29 CEDARLEA Uza 71J**

January 22, 2021 • FC811378 • LEO 71J • Homo Polled

PLEASANTDAWN COUNTER 19C

**CEDARLEA THE COUNT 175F**

CEDARLEA TWISTER 24D

HRJ MR APACHE 3A

**CEDARLEA UZA 23C**

CEDARLEA UZA 38Z

EPDS	BW	WW	YW	MTL	Milk
	1.3	44	97	45	23

**BW 96 • WW 549 • YW 917**

**lot 30 CEDARLEA Poppy 72J**

January 22, 2021 • FC811379 • LEO 72J • P

PLEASANTDAWN COUNTER 19C

**CEDARLEA THE COUNT 175F**

CEDARLEA TWISTER 24D

JWX DIPLOMAT 254D

**CEDARLEA POPPY 145F**

CEDARLEA POPPY 45A

EPDS	BW	WW	YW	MTL	Milk
	0.2	44	95	45	22

**BW 80 • WW 678 • YW 1008**

- Ranks in the Top 20% for REA, 25% LY, 35% CE, 30% YW, 35% CE
- A Count heifer that exhibits extra length, exquisite neck extension and is gorgeous clean fronted
- The Poppy family has produced bulls for Elder Charolais, AM Sunrise Charolais, Kattle Kountry, Don and Karen Blake
- Bred April 17, 2022 to Hopewell Strada 48H - Ultrasound checked safe to AI



Lot 30





Lot 31

**lot 31 CEDARLEA *Nina* 162J**

February 11, 2021 • FC811493 • LE0 162J • P

PLEASANTDAWN COUNTER 19C

**CEDARLEA THE COUNT 175F**

CEDARLEA TWISTER 24D

PCC ROME 437B

**CEDARLEA NINA 14D**

CEDARLEA NINA 22Y

EPDS	BW	WW	YW	MTL	Milk
	2.2	44	91	46	24

**BW 96 • WW 580 • YW 895**

- Ranks in the Top 25% for M, 30% CW, 35% TM, 40% YW
- A moderate framed Count Daughter with a ton of depth and volume
- Well balanced with a big hip and strong top
- Bred April 13, 2022 to LT Authority 7229PLD - Ultrasound checked safe to AI

**lot 32 CEDARLEA *Twister* 172J**

February 15, 2021 • FC811397 • LE0 172J • Homo Polled

PLEASANTDAWN COUNTER 19C

**CEDARLEA THE COUNT 175F**

CEDARLEA TWISTER 24D

GERRARD PASTOR 35Z

**CEDARLEA TWISTER 154F**

CEDARLEA TWISTER 3X

EPDS	BW	WW	YW	MTL	Milk
	0.2	50	100	48	23

**BW 81 • WW 605 • YW 904**

- Ranks in the Top 20% for YW/TM, 25% WW, 30% M/CW/REA, 35% LY, 40% BW
- If you like them with a big hip, deep quarter and still a smooth flat shoulder here she is
- Longevity, 3X grandam still producing in 2022
- Bred April 14, 2022 to Cedarlea Howitzer 49H - Ultrasound checked safe to AI



Lot 32

**lot 33 CEDARLEA *Wanita* 183J**

February 19, 2021 • FC811408 • LE0 183J • P

PLEASANTDAWN COUNTER 19C

**CEDARLEA THE COUNT 175F**

CEDARLEA TWISTER 24D

TURNBULL'S ELITE 322E

**CEDARLEA WANITA 158G**

CEDARLEA WANITA 61D

EPDS	BW	WW	YW	MTL	Milk
	-1.4	53	106	51	25

**BW 80 • WW 682 • YW 976**

- Ranks in the Top 10% for YW/TM, 15% WW, 20% BW/M, 35% CW, 40% REA
- An eye-appealing Count daughter with a solid pedigree
- The Wanita cow family has been very productive with many daughters in the herd and is the source of Cedarlea Yuma that worked well for Seven Quarter Circle Charolais and Bar B Charolais
- Bred April 13, 2022 to Cedarlea Howitzer 49H - Ultrasound checked safe to AI



Lot 33



**lot 34 CEDARLEA *Truffle* 200J**

February 26, 2021 • FC811431 • LEO 200J • Homo Polled

PLEASANTDAWN COUNTER 19C

**CEDARLEA THE COUNT 175F**

CEDARLEA TWISTER 24D

PCC ROME 437B

**CEDARLEA TRUFFLE 100D**

CEDARLEA TRUFFLE 26Z

EPDS	BW	WW	YW	MTL	Milk
	1.1	48	94	50	26

**BW 97 • WW 665 • YW 929**

- Ranks in the Top 10% for M/TM, 20% CW/LY, 35% WW/YW, 45% REA/LY
- The Truffle cow family has produced bulls and heifers that are active in the Devon and Dr. Sarah Allin herd and TK Cattle Company herd.
- Truffle's mating with Cedarlea Epic will work extremely well
- Bred April 13, 2022 to Cedarlea Epic 14E - Ultrasound checked safe to AI



Lot 34

**lot 35 CEDARLEA *Wilhelmina* 219J**

March 4, 2021 • FC811550 • LEO 219J • Homo Polled

PLEASANTDAWN COUNTER 19C

**CEDARLEA THE COUNT 175F**

CEDARLEA TWISTER 24D

JWX DIPLOMAT 254D

**CEDARLEA WILHELMINA 83G**

CEDARLEA WILHELMINA 105C

EPDS	BW	WW	YW	MTL	Milk
	-0.6	56	111	51	23

**BW 81 • WW 782 • YW 1068**

- Ranks in the Top 5% for YW, 10% WW/TM, 20% REA, 25% LY, 30% BW/CW, 30% BW 35% CE
- Another big hipped Count daughter out of the Wilhelmina cow family that's setting up a beautiful udder
- Well balanced heifer with a beautiful muscle pattern
- Bred April 13, 2022 to Hopewell Strada 48H - Ultrasound checked safe to AI



Lot 35

**lot 36 CEDARLEA *Willow* 12J**

January 12, 2021 • FC811291 • LEO 12J • P

PLEASANT DAWN MVP 316Y

**TURNBULL'S ELITE 322E**

CTP MISS ELICIT 322Z

CSS SIR GRIDMAKER 2W

**CEDARLEA WILLOW 52A**

CEDARLEA WILLOW 3W

EPDS	BW	WW	YW	MTL	Milk
	-1.8	51	98	51	26

**BW 87 • WW 634 • YW 898**

- Ranks in the Top 10% for TM, 15% M, 20% BW, 25% WW/YW/MARB, 30% CW
- 12J is a broody Elite daughter with an excellent EPD profile
- Dam is the robust Cedarlea Willow 52A
- Half sister 167K sells as lot 7
- Mated to the exciting new Hopewell Strada 48H ranks in the top 20% for CE, top 25% for BW, top 3% for WW, top 1% for YW and top 2% TM
- Bred April 14, 2022 to Hopewell Strada 48H - Ultrasound checked safe to AI



Lot 36





Lot 37

*lot* **37**

**CEDARLEA** *Taupe* **13J**

January 12, 2021 • FC811292 • LE0 13J • Homo Polled

PLEASANT DAWN MVP 316Y  
**TURNBULL'S ELITE 322E**  
 CTP MISS ELICIT 322Z

RBM FARGO Y111  
**CEDARLEA TAUPE 140G**  
 CEDARLEA TAUPE 12D

EPDS	BW	WW	YW	MTL	Milk
	-1.6	55	107	54	27

**BW 79 • WW 671 • YW 957**

- Ranks in the Top 2% for TM, 10% CE/WW/YW/M, 20% CE/BW/CW, 35% MARB
- A very good Elite daughter, one of our favourites
- Dam Sells 140G bred to Lock N Load
- High value mating - Howitzer is the high selling homozygous polled Authority son from our 2021 bull sale going to Wienk Charolais Ranch, Lake Preston South Dakota
- Bred April 13, 2022 to Cedarlea Howitzer 49H - Ultrasound checked safe to AI



**lot 38 CEDARLEA Ucala 21J**

January 13, 2021 • FC811297 • LEO 21J • Homo Polled

PLEASANT DAWN MVP 316Y

**TURNBULL'S ELITE 322E**

CTP MISS ELICIT 322Z

CSS SIR GRIDMAKER 2W

**CEDARLEA UCALA 70A**

CEDARLEA UCALA 60U

EPDS	BW	WW	YW	MTL	Milk
	-1.3	49	95	47	22

**BW 87 • WW 636 • YW 908**

- Ranks in the Top 20% for BW/MARB, 30% WW/YW/TM, 35% CE/CW
- Ucala 70A has produced bulls working at Downie Lake Colony
- Houlio half sister 113K sells as lot 1
- Affinity half sister 67G sells as lot 14
- Bred April 14, 2022 to Hopewell Strada 48H - Ultrasound checked safe to AI



Lot 38

**lot 39 CEDARLEA Rendezvous 64J**

January 20, 2021 • FC832321 • LEO 64J • P/S

PLEASANT DAWN MVP 316Y

**TURNBULL'S ELITE 322E**

CTP MISS ELICIT 322Z

VFF TIME OUT 172Y

**CEDARLEA RENDEVOUS 39B**

CEDARLEA RENDEZVOUS 37Y

EPDS	BW	WW	YW	MTL	Milk
	-1.3	51	103	49	24

**BW 92 • WW 621 • YW 899**

- Ranks in the Top 5% for MARB, 15% YW/TM, 20% BW/REA, 25% WW/M/LY, 35% CE/CW/FAT
- Another easy fleshing Elite daughter: functional, sound, all travel well with a long free and easy stride
- The Rendezvous cow family has produced many bulls for many good cattlemen: Don and Karen Blake, Still Hill Land and Cattle, Hicken Ranches, Downie Lake, Larry Crooks, Kool Springs Ranch
- Maternal sister to Cedarlea Rendezvous 1256, Turnbull's Charolais pick of our cow herd purchased at Superstar 2020
- Bred May 6, 2022 to Hopewell Strada 48H - Ultrasound checked safe to AI



Lot 39

**lot 40 CEDARLEA Wilhelmina 33J**

January 15, 2021 • FC811318 • LEO 33J • Homo Polled

SPARROWS FARGO 811U

**RBM FARGO Y111**

HC RHINESTONE 5100

SHSH ROLEX 22A

**CEDARLEA WILHELMINA 105C**

CEARLEA WILHELMINA 80A

EPDS	BW	WW	YW	MTL	Milk
	-1.1	60	122	54	24

**BW 88 • WW 666 • YW 1018**

- Ranks in the Top 1% for YW, Top 2% TM//REA/LY, 3% WW, 5% CE, 15% CW, 25% BW/M
- A Fargo daughter with an exceptional foot - Fargo progeny have ideal hoof structure
- Attractive neck extension, striking profile
- The Wilhelmina cow family has produced a number of bulls working at Goodbrand Land and Cattle and Downie Lake
- Bred April 13, 2022 to Cedarlea Howitzer 49H - Ultrasound checked safe to AI



Lot 40





Lot 41

*lot* **41**

**CEDARLEA** *Unique* **56J**

January 17, 2021 • FC811353 • LEO 56J • Homo Polled

SPARROWS FARGO 811U  
**RBM FARGO Y111**  
 HC RHINESTONE 5100

CIRCLE CEE LEGEND 307A  
**CEDARLEA UNIQUE 23F**  
 CEDARLEA UNIQUE 8U

EPDS	BW	WW	YW	MTL	Milk
	-0.2	60	118	56	26

**BW 86 • WW 711 • YW 1028**

- Ranks in the Top 1% for TM, 2% YW, 4% WW, 5% REA, 10% M/CW/LY, 15% CE, 35% BW
- Strong Maternal background, one of the most dominant cow families in the Cedarlea cowherd
- The Fargo daughters are now a prominent component of our cowherd, they are very versatile with the ability to work with many different mating combinations
- This Unique cow family has produced a number of high selling bulls that are producing at Jared Preston's Double P Stock Farms and Corey Livestock
- Bred April 13, 2022 to Hopewell Strada 48H - Ultrasound checked safe to AI



- Ranks in the Top 3% for CE, 10% BW/M/TM, 15% REA, 20% YW, 25% LY, 30% WW
- The Fargo X Legend cross has been incredible: calving ease without giving up any of the high-end growth/performance
- Tinsel 59J is the next generation from one of our most prolific cow families
- Tinsel 27C has produced bulls for Thistle Croft Farms and M & M Robertson Ranch
- Bred April 30, 2022 to Cedarlea Howitzer 49H - Ultrasound checked safe to AI



Lot 42

*lot* **42** CEDARLEA *Tinsel* 59J

January 18, 2021 • FC811358 • LE0 59J • Homo Polled

SPARROWS FARGO 811U

**RBM FARGO Y111**

HC RHINESTONE 5100

CIRCLE CEE LEGEND 307A

**CEDARLEA TINSEL 27C**

CEDARLEA TINSEL 27T

EPDS	BW	WW	YW	MTL	Milk
	-2.8	50	101	51	26

**BW 81 • WW 536 • YW 813**

*lot* **43** CEDARLEA *Wendy* 140J

February 4, 2021 • FC811471 • LE0 140J • P/S

SPARROWS FARGO 811U

**RBM FARGO Y111**

HC RHINESTONE 5100

CIRCLE CEE LEGEND 307A

**CEDARLEA WENDY 17E**

CEDARLEA WENDY 51W

EPDS	BW	WW	YW	MTL	Milk
	0.5	61	120	56	26

**BW 98 • WW 669 • YW 979**

- Ranks in the Top 1% for TM, 2% YW, 3% WW, 5% REA, 10% CW/LY, 15% CE/M
- A Fargo daughter from the Wendy cow family
- Service sire Cedarlea Howitzer working at Wienk Charolais whose dam 86C is a Gold Star Dam of distinction
- Bred April 13, 2022 to Cedarlea Howitzer 49H - Ultrasound checked safe to AI



Lot 43





- Ranks in the Top 10% for CE, 25% WW/TM, 30% YW/REA, 35% CW
- The Fargo x Reno combination has worked exceptionally well
- Yarra 11Y produced a high selling Kingston heifer working for Jamie Ehret at Flat Valley Cattle Company
- Yarra 11Y is a sound, good footed Reno daughter: Longevity definitely is a Reno trait
- Bred April 13, 2022 to LT Authority - Ultrasound checked safe to AI

Lot 44

*lot* **44** CEDARLEA *Yarra* 161J

February 11, 2021 • FC811492 • LEO 161J • P

SPARROWS FARGO 811U

**RBM FARGO Y111**

HC RHINESTONE 5100  
CSS SIR GRIDMAKER 2W

**CEDARLEA YARRA 11Y**

CEDARLEA LABELLE 49L

EPDS	BW	WW	YW	MTL	Milk
	0.2	51	95	47	22

**BW 94 • WW 625 • YW 898**

*lot* **45** CEDARLEA *Wendy* 163J

February 12, 2021 • FC811494 • LEO 163J • Homo Polled

SPARROWS FARGO 811U

**RBM FARGO Y111**

HC RHINESTONE 5100  
SPARROWS RENO 824U

**CEDARLEA WENDY 28Y**

CEDARLEA WENDY 51W

EPDS	BW	WW	YW	MTL	Milk
	0.7	59	116	54	24

**BW 101 • WW 710 • YW 988**



- Ranks in the Top 3% for YW/TM, 5% WW, 10% CE/CW/REA/LY, 25% M
- A powerful Fargo daughter out of the long-lasting Wendy 28Y
- Wendy 28Y produced the high selling Cedarlea Caesar 30D bull in 2017 going to Triple C Charolais
- Bred April 13, 2022 to Cedarlea Howitzer 49H - Ultrasound checked safe to AI

Lot 45





Lot 46

*lot* **46**

**CEDARLEA** *Wendy* **139J**

February 3, 2021 • FC811470 • LEO 139J • Homo Polled

RBM FARGO Y111  
**CEDARLEA TAPADERO 17G**  
 CEDARLEA UZA 44Y

GERRARD PASTOR 35Z  
**CEDARLEA WENDY 95C**  
 CEDARLEA WENDY 28Y

EPDS	BW	WW	YW	MTL	Milk
	-1.2	54	107	53	26

**BW 86 • WW 654 • YW 926**

- Ranks in the Top 3% for TM, 10% YW/M/REA, 15% CE/WW/CW/LY, 25% BW
- Here is a special heifer sired by the high selling Cedarlea Tapadero bull that's working great for Kay R Charolais
- 95C is the dam of Cedarlea Wendy 9G high selling heifer going to Horseshoe E Charolais
- Another female going back to Wendy 51W. Dam 28Y produced high selling bull Cedarlea Caesar 30D in 2017 to Triple C Charolais, as well as numerous productive females.
- Bred April 24, 2022 to Hopewell Strada 48H - Ultrasound checked safe to AI



Sire: **CEDARLEA TAPADERO 17G**





Lot 47

*lot* **47** CEDARLEA *Show Me 2J*

January 9, 2021 • FC811278 • LE0 2J • Homo Polled

LHD CHOTEAU B1669 P

**LT AUTHORITY 7229 PLD**

LT KATY 4273 PLD

RBM FARGO Y111

**CEDARLEA SHOW ME 34G**

CEDARLEA SHOW ME 70Z

EPDS	BW	WW	YW	MTL	Milk
	-4	45	91	44	21

**BW 70 • WW 596 • YW 929**

- Ranks in the Top 1% for CE, 4% BW, 30% MARB, 40% YW
- A prototypical calving ease Authority daughter with better than average growth. The Authority daughters have exceeded our expectations with beautiful shaped udders and perfect teat placement.
- Authority progeny all have a wonderful disposition and are nice to work with
- Bred April 14, 2022 to Hopewell Strada 48H - Ultrasound checked safe to AI

*lot* **48** CEDARLEA *Wendy 22J*

January 13, 2021 • FC811298 • LE0 22J • Homo Polled

LHD CHOTEAU B1669 P

**LT AUTHORITY 7229 PLD**

LT KATY 4273 PLD

JWX DIPLOMAT 254D

**CEDARLEA WENDY 78G**

CEDARLEA WENDY 28Y

EPDS	BW	WW	YW	MTL	Milk
	-5.9	38	79	42	23

**BW 60 • WW 601 • YW 937**

- Ranks in the Top 1% for CE/BW, 35% M/MARB,
- Goes back to the great Wendy Cow Family LE0 51W
- The Wendy cow family has produced numerous females retained in-herd and high selling bulls working at Triple C Charolais and Stolson Farms
- Bred April 16, 2022 to Hopewell Strada 48H - Ultrasound checked safe to AI



Lot 48



**lot 49 CEDARLEA *Truffle* 37J**

January 15, 2021 • FC811324 • LEO 37J • Homo Polled

LHD CHOTEAU B1669 P

**LT AUTHORITY 7229 PLD**

LT KATY 4273 PLD

CEDARLEA EPIC 14E

**CEDARLEA TRUFFLE 89G**

CEDARLEA TRUFFLE 51A

EPDS	BW	WW	YW	MTL	Milk
	-2.5	52	100	50	24

**BW 75 • WW 653 • YW 939**

- Ranks in the Top 10% for BW, 15% CE/TM, 20% WW/YW/MARB, 25% M, 35% REA
- An Authority daughter with an impeccable pedigree that's been a stand-out from birth
- 89G sired by Epic, our 2018 bull sale high dollar bull now doing an exceptional job at Wilgenbusch Charolais
- Bred April 13, 2022 to Turnbull's Elite 322E - Ultrasound checked safe to AI



Lot 49



SOD: CEDARLEA EPIC 14E

**lot 50 CEDARLEA *Rheta* 26J**

January 14, 2021 • FC811304 • LEO 26J • Homo Polled

LT LEDGER 0332 P

**CIRCLE CEE LEGEND 307A**

CIRCLE CEE STUNNING 125Y

RBM FARGO Y111

**CEDARLEA RHETA 35G**

CEDARLEA RHETA 13Z

EPDS	BW	WW	YW	MTL	Milk
	-4.9	48	95	51	27

**BW 66 • WW 572 • YW 849**

- Ranks in the Top 1% for CE, 2% BW, 10% M/TM, 15% REA, 30% YW, 35% WW, 40% LY
- Beautiful Legend daughter - Legend the Swiss Army Knife of the Charolais breed
- Clean, smooth and will become a maternal powerhouse
- Bred April 13, 2022 to Turnbull's Elite 322E - Ultrasound checked safe to AI



Lot 50

**lot 51 CEDARLEA *Nina* 121J**

January 31, 2021 • FC811448 • LEO 121J • P

LT LEDGER 0332 P

**CIRCLE CEE LEGEND 307A**

CIRCLE CEE STUNNING 125Y

CSS SIR GRIDMAKER 2W

**CEDARLEA NINA 64Z**

CEDARLEA NINA 91N

EPDS	BW	WW	YW	MTL	Milk
	0.8	50	94	52	27

**BW 104 • WW 602 • YW 863**

- Ranks in the Top 10% for M/TM/REA/LY, 10% TM, 25% WW, 35% YW/FAT
- Another stylish Legend heifer out of a productive Gridmaker
- Legend daughters have been a mainstay in the cowherd and have proven themselves over and over again
- The Nina cow family has produced a number of bulls for Turkey Track Ranch and Stone Barn Farms
- Bred April 14, 2022 to Hopewell Strada 48H - Ultrasound checked safe to AI



Lot 51





Lot 52

- Ranks in the Top 10% for Fat, 25% M/LY, 30% CW/REA, 35% WW/TM
- Powerful, big volume heifer bred to the curve bender Circle Cee Legend bull
- The Nelly cow family has longevity built in, structurally sound and very productive with bulls working for Bluestone Stock Farms, Allen McLeod and a high selling heifer at Turnbull Charolais
- Bred April 13, 2022 to Circle Cee Legend 307A - Ultrasound checked safe to AI

**lot 52 CEDARLEA *Nelly* 74J**

January 22, 2021 • FC811381 • LEO 74J • Homo Polled

PLEASANT DAWN CHISUM 216A

**PLEASANTDAWN COLUMN 730G**

PLEASANTDAWN LADY 730Z

CSS SIR GRIDMAKER 2W

**CEDARLEA NELLY 42Z**

CEDARLEA NELLY 29X

EPDS	BW	WW	YW	MTL	Milk
	1.8	49	92	46	21

**BW 106 • WW 660 • YW 898**

**lot 53 CEDARLEA *Glitter* 188J**

February 21, 2021 • FC811416 • LEO 188J • P

PLEASANT DAWN CHISUM 216A

**PLEASANTDAWN COLUMN 730G**

PLEASANTDAWN LADY 730Z

SPARROWS KINGSTON 139Y

**CEDARLEA GLITTER 10D**

CEDARLEA GLITTER 36Y

EPDS	BW	WW	YW	MTL	Milk
	2.5	44	90	47	25

**BW 105 • WW 628 • YW 855**



Lot 53

- Ranks in the Top 3% for FAT, 20% M/LY, 25% TM/REA/MARB, 30% CW
- Trim-made Column x Kingston daughter with excellent carcass numbers
- Glitter cow family has produced a number of bulls that are working at Perrin Ranching and LZ Farms
- Bred April 13, 2022 to Circle Cee Legend 307A - Ultrasound checked safe to AI



ref **S**

**RBM Fargo Y111**

February 05 2011 • MC719837 • Homo Polled

EPDS	BW	WW	YW	MTL	Milk
	1.8	66	129	56	23

- Ranks in the Top 1% for WW/YW/TM, 2% CW, 3% REA/LY, 10% CE, 35% M
- 100K tested
- Homozygous polled
- BW - 96 lbs
- Fargo is a highly proven sire with exceptional smoothness, tremendous muscle shape
- Fargo improves hoof structure, ramps up weaning/yearling growth and adds hair
- His sons always top the charts for Ribeye Area and Lean Yield
- Fargo sires tremendous females that are complete and highly productive



ref **S**

**CEDARLEA The Count 175F**

February 28 2018 • MC744322 • LEO 175F • Homo Polled

EPDS	BW	WW	YW	MTL	Milk
	1.6	52	107	48	22

- Ranks in the Top 10% for YW, 20% WW/TM, 25% REA, 30% CW/LY
- 100K tested
- BW - 88 lbs
- Used to moderate frame, increase growth and maternal traits
- Wonderful disposition, very docile
- Co-owned with Soderglen Ranches



ref **S**

**LT Authority 7229 PLD**

March 14 2017 • MC772435 • Homo Polled

EPDS	BW	WW	YW	MTL	Milk
	-6.3	38	70	41	22

- Ranks in the Top 1% for CE/BW, 15% MARB, 45% M
- 100K tested
- Homozygous polled
- BW - 82 lbs
- Outcross pedigree, calving ease supreme, excellent phenotype
- Authority is an incredible female producer: well balanced, moderate framed, easy fleshing, calm/quiet disposition with perfect udders
- Daughters provide wide range of mating flexibility



ref **S**

**ELDER'S Houlio 4H**

January 05 2020 • MC794847 • KLR 4H • Homo Polled

EPDS	BW	WW	YW	MTL	Milk
	1.4	61	119	52	22

- Ranks in the Top 2% for YW/CW, 3% WW, 4% REA/LY, 5% TM, 25% MARB, 45% M
- 100K tested
- Homozygous polled
- BW - 98
- 2021 Canadian high selling bull for Elder's Charolais Farm, selling to LT Ranch Isabel SD for \$110,000
- Very solid EPD profile: backed up by a powerful pedigree
- Houlio has produced beyond expectations, we are confident he will contribute greatly to our breed







ref **S**

## CEDARLEA *Howitzer* 49H

January 22 2020 • MC788900 • LEO 49H • Homo Polled

EPDS	BW	WW	YW	MTL	Milk
	0.9	57	109	50	22

- Ranks in the Top 2% for MARB, 4% CW, 10% WW/YW/TM/REA/LY
- 100K tested
- Homozygous polled
- BW - 102 lbs
- High Selling Bull 2021 Bull Sale to Wienk Charolais Ranch, Lake Preston SD
- Used extensively in the Wienk heifer program with great success
- Whitby 86C also the dam of: Cedarlea Epic 14E high seller selected by Wilgenbusch Charolais and Cedarlea Bushmills 14F high seller selected by Strutt Charolais
- Dam 86C is a Gold Star Dam of Distinction



ref **S**

## CEDARLEA *Epic* 14E

January 14 2017 • MC722399 • LEO 14E • Homo Polled

EPDS	BW	WW	YW	MTL	Milk
	-1.2	58	119	58	29

- Ranks in the Top 1% for TM, 2% YW/M, 10% WW/CW/REA, 15% CE/LY, 25% BW, 30% MARB
- 100K tested
- Homozygous polled
- BW - 86
- Epic was used extensively in the Wilgenbusch heifer pen, their Epic sired sons exceeded their calving ease and growth expectations
- Whitby 86C also the dam of: Cedarlea Howitzer 49H high seller selected by Wienk Charolais Ranch, Lake Preston SD, and Cedarlea Bushmills 14F high seller selected by Strutt Charolais
- Dam 86C is a Gold Star Dam of Distinction



ref **S**

## CEDARLEA *Tapadero* 17G

January 20 2019 • MC766341 • LEO 17G • Homo Polled

EPDS	BW	WW	YW	MTL	Milk
	-0.9	56	116	49	21

- Ranks in the Top 1% for REA, 2% LY, 3% YW, 10% CE/WW/CW, 15% TM, 25% BW/MARB
- 100K tested
- Homozygous polled
- BW - 97 lbs
- Wonderful EPD profile calving ease with exceptional weaning and yearling growth
- One of the largest ribeye bulls we've produced and consistent with RBM Fargo Y111 progeny
- Doing a tremendous job at Kay-R Charolais, sired the high selling bull at their 2022 bull sale



ref **S**

## CEDARLEA *Shoeless Joe* 83C

February 07 2015 • MC369213 • LEO 83C • Homo Polled

EPDS	BW	WW	YW	MTL	Milk
	1.6	52	107	48	22

- Ranks in the Top 5% for REA, 10% WW, 15% CE/YW/LY, 20% TM, 35% BW, 40% MARB
- 100K tested
- Homozygous polled
- BW 82 lbs
- Shoeless Joe has been a stalwart at Turnbull's producing a number of high selling bulls
- Shoeless Joe daughters are excellent producers





# CIRCLE CEE *Legend* 307A

January 16 2013 • MC351853 • CEE 307A • 3rd Gen Polled

EPDS	BW	WW	YW	MTL	Milk
	-6.5	49	97	59	34

- Ranks in the Top 1% for CE/BW/M/TM, 25% YW, 30% WW, 45% LY
- BW - 86 lbs
- The Swiss Army Knife of the Charolais breed
- Not many (if any) bulls have done what Legend has done for the Charolais breed in Canada
- Circle Cee Legend the "Legend" - needs no introduction

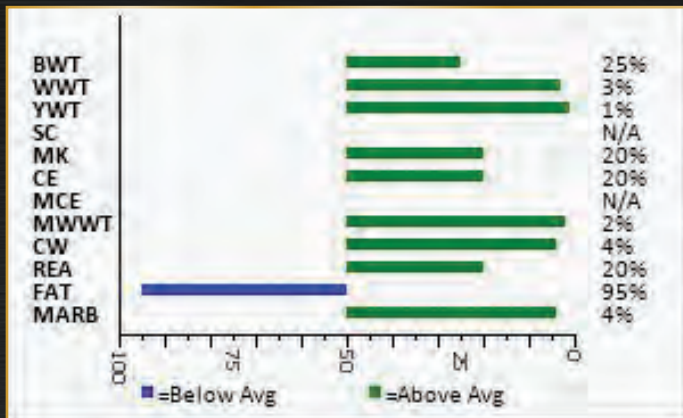


# HOPEWELL *Strada* 48H

February 20 2020 • MC808144 • AMB 48H • Homo Polled

EPDS	BW	WW	YW	MTL	Milk
	-1.1	61	127	55	25

- Ranks in the Top 1% for YW, 2% TM, 3% WW, 4% CW/MARB, 15% LY, 20% CE/M/REA, 25% BW
- 100K tested
- Homozygous polled
- BW - 86 lbs
- Calving ease bull with best in breed for weaning and yearling weights
- Staked pedigree; Estrada, Chisum, Big Bud, LT Lanza, Winn Mans Lanza, Vermillion
- Successfully calved heifers



# TURNBULL'S *Elite* 322E

March 06 2017 • MC728401 • CTP 322E • Homo Polled

EPDS	BW	WW	YW	MTL	Milk
	-4.7	54	106	54	27

- Ranks in the Top 2% for TM, 3% BW, 5% MARB, 10% YW/M, 15% WW, 25% CE, 35% CW
- 100K tested
- Homozygous polled
- BW - 100 lbs
- Pleasant Dawn MVP son that will add thickness and remarkable muscle shape
- His strong pedigree provides some of the highest weaning and yearling weights in the Canadian Charolais Herdbook
- Elite is proving to be an outlier, providing excellent calving ability, remarkable growth and outstanding carcass results



# PLEASANT DAWN *Column* 730G

February 07 2019 • MC770762 • TLJ 730G • Homo Polled

EPDS	BW	WW	YW	MTL	Milk
	0.6	45	95	42	20

- Ranks in the Top 2% MARB, 20% FAT, 30% YW, 45% CW
- 100K tested
- Homozygous polled
- BW - 89 lbs
- Pleasant Dawn MVP son that will add thickness and muscle shape
- Column daughters make all-around complete cows that deliver







ref **S**

**WGD** *Ruger 8J*

January 4, 2021 • MC816608 • WGD 8J • Homo Polled

EPDS	BW	WW	YW	MTL	Milk
	-0.8	41	86	43	22

- Ranks in the top 5% for MARB, 10% REA, 15% LY, 30% BW, 35% CE/FAT, 40% M
- 100K tested
- Homozygous polled
- BW - 101 lbs
- High seller for Daines Cattle & O'Neill Livestock Bull Sale \$72,000 selected by Springside Farms
- Son of LT Ransom 2019 Lindskov-Thiel Bull Sale high seller



ref **S**

**BRIMNER** *Bull 44J*

February 21 2021 • MC826999 • GBR 44J • Homo Polled

EPDS	BW	WW	YW	MTL	Milk
	-3.5	42	76	41	20

- Ranks in the Top 5% for CE/BW
- 100K tested
- Homozygous polled
- BW 87 lbs
- Calving ease, excellent phenotype with a ton of hair



ref **S**

**HC** *Hotshot 13H*

January 03 2020 • MC790921 • HC 13H • Double Polled

EPDS	BW	WW	YW	MTL	Milk
	-3.0	58	94	51	22

- Ranks in the Top 10% for BW/WW/TM, 25% CE, 30% YW, 30% YW, 40% M
- Double polled
- BW - 80 lbs
- Calving son of DCR Mr Dual-Threat D112 that's working so well at Hunter Charolais



ref **S**

**TRI-N** *Arctic Wolf 52J*

February 22 2021 • MC824923 • NMF 52J • Homo Polled

EPDS	BW	WW	YW	MTL	Milk
	-1.3	62	115	49	18

- Ranks in the Top 3% for WW/YW, 10% CW, 15% TM, 20% BW, 30% CE, 35% REA
- 100K tested
- Homozygous polled
- BW - 92 lbs
- SCX Jehu 233E son that was the high seller at the 2022 Tri-N bull sale
- The most complete son Jehu has produced: exceptional phenotype, maternal and growth trait leader



# Terms & Conditions

## Terms:

The terms of the sale are cash or cheque, payable at par at the sale location. The right of property shall not pass until after settlement has been made; no invoicing on buyers in attendance unless previous arrangements have been made. Every animal sells to the highest bidder and in cases of disputes, the auctioneer's decision will be final. Announcements from the auction block will take precedence over the printed matter in the catalogue. Current exchange rates will be announced sale day. All monies are in Canadian funds.

## Certificate of Registration:

Each animal will carry papers issued by the Canadian Charolais Association. A certificate of registry duly transferred will be furnished to the buyer for each animal after payment has been made.

## Pedigree Estimates:

Pedigree Estimates (PE) are created on the projected mating of the animal's sire and dam based on averages of the two, creating estimated values that do not hold the same accuracy of actual EPDs issued from the association and should be used as such.

## Health:

All animals in the sale have met all necessary health requirements.

## Guarantee:

Each animal becomes the purchaser's risk immediately after the animal is sold. All animals in this sale will be sold under the terms and guarantees set forth by the Canadian Charolais Association with regard to health, freedom from defects and from both reproductive and specific genetic unsoundness.

## Pregnancy Information:

All serviceable age females have been pregnancy examined by an accredited veterinarian, giving an estimated length of gestation. This estimated gestation period shall be used only as a guideline to calving and is not a guarantee of actual service.

## Liabilities:

All persons attend the sale at their own risk. The seller, facility owner and sale manager assume no liability legal or otherwise, for any accidents that occur. It is understood that T Bar C Cattle Co. (2013) Ltd. is acting only as a medium between buyer and seller and is not responsible for any failure on the part of either party to live up to his obligations. Neither does T Bar C Cattle Co. (2013) Ltd. assume any financial obligations to collect or enforce collection of any monies between parties and any legal action that may in exceptional cases be taken must be between the buyer and the seller. T Bar C Cattle Co. (2013) Ltd. assumes no responsibility for any credit extended by the seller to the buyer. The buyer must look to the seller for fulfillment of all guarantees and representations made hereunder.

## Phone, Mail, Wire Bids:

Bidders unable to attend the sale may phone, wire or mail their bids and instructions to the sale manager, auctioneer or special representatives. Bids must be received in sufficient time prior to the sale.

## Insurance:

We strongly recommend that insurance is purchased for full value.

## Errors:

All announcements at sale time, written or oral, supercede any written material in the catalogue.

## Exposures

### HC Hotshot 13H

Exposed May 10, 2022 to June 30, 2022

Exposed to:

All "J" bred heifers

### Cedarlea The Count 175F

Exposed May 10, 2022 to June 30, 2022

Exposed to:

LEO 48H, LEO 57H, LEO 173H, LEO 189H,  
LEO 44G, LEO 67G, LEO 113G, LEO 114G,  
LEO 140G, LEO 9F, LEO 18F, LEO 142F

### Turnbull's Elite 322E

Exposed May 10, 2022 to June 30, 2022

Exposed to:

LEO 66H, LEO 108H, LEO 109H,  
LEO 180H, LEO 165G, LEO 177G

## Herd Health Program

Cedarlea Farms Advanced Herd Health program focuses on disease prevention. Our cow herd participates with Boehringer Ingelheim Canada Health's Express Verified Plus program and receives an annual pre-calving Express Fetal Protection vaccine (5 way viral) which provides the developing calf guaranteed protection against the Bovine Viral Diarrhea virus. The bred females are also given an annual Scour Bos 9, clostridial and Haemophilus somnus vaccine at this time.

At 14 to 21 days of age calves are given toltrazuril, Pyramid 5 + Presponse SQ and Fermicon 7/Somnugen. The calves are all boosted during the last 10 days of May prior to pasture turnout with Express FP 5/Somnugen, Presponse HM and Covexin Plus. The calves will also receive Longrange for long lasting parasite control. At weaning all calves are boosted again with Express FP 5/Somnugen, Presponse HM and Covexin Plus. The replacement heifers will be given a dose of Express FP 5 pre-breeding to guarantee the resulting progeny will be BVD Persistently Infection free. The sale bulls also carry the Boehringer Ingelheim health guarantee after they are vaccinated with Express FP 5 prior to our bull sale. The entire Cedarlea herd (cows, bred heifers, open replacement heifers and bulls) is treated with Ivomec and Clean-Up II in late fall. The entire herd is on a chelated mineral and trace mineral program. Our calves are raised on milk and grass. They are not creep fed.

You can buy with confidence knowing we have done everything possible to prevent disease and ensure the prudent use of antibiotics.

An update on vaccinations and parasite control will be given at sale time





Return Undeliverable  
Canadian Addresses To:

T Bar C Cattle Co. Ltd.  
Box 2330  
Warman, SK S0K 4S0



**NEW**

*Date*

**NEW**

*Venue*

**NEW**

*Opportunities*



**Don't Miss Our Bull Sale!**

March 15, 2023 • New Sale Facility on the Farm